



George V Avenue, Worthing

£825 Per
Calendar Month

- Ground Floor Flat
- One Bedroom
- Open Plan Living
- Close to Local Shops
- EPC Rating C
- Council Tax Band - A
- Available End of June 2024

**** VIEWINGS FULLY BOOKED **** Robert Luff & Co is delighted to offer this one bedroom apartment including bathroom, open plan fitted kitchen/living room, gas central heating and double glazing. The property is unfurnished and available end of July

T: 01903 331247 E: info@robertluff.co.uk
www.robertluff.co.uk

**Robert
Luff & Co**
Sales | Lettings | Commercial



Accommodation

Communal Entrance

Access to through the communal courtyard leading to:

Entrance Hall

Entryphone system. Laminate flooring. Doors leading to:

Open Plan Lounge Kitchen 17'0" max x 11'0" (5.18 max x 3.35)

Double glazed side aspect windows. Laminate flooring. Double radiators.

Matching wall and base units incorporating the stainless steel sink with drainer and mixer tap. Built in electric oven with a four ring gas hob, extractor hood and stainless steel splash back. Integral washing machine and fridge with freezer compartment. Radiator.

Bedroom 11'5" x 7'5" (3.48 x 2.26 (3.49 x 2.25))

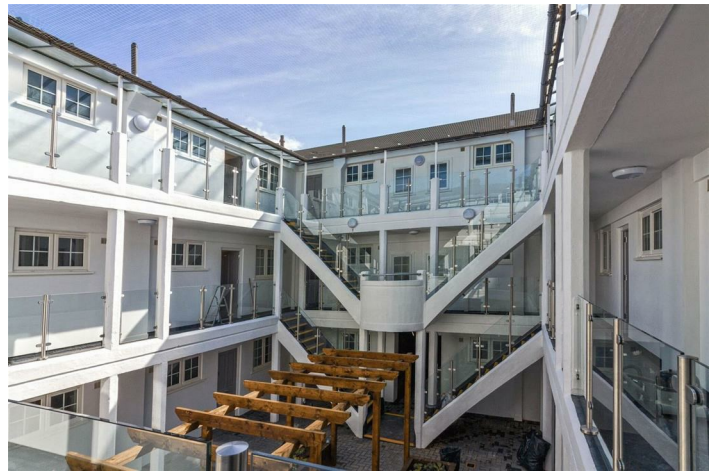
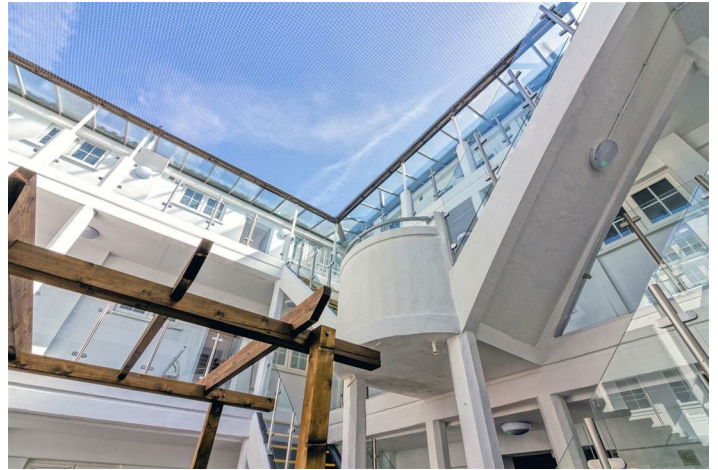
Double glazed side aspect window. Radiator.

Bathroom

Double glazed side aspect window. Paneled bath with shower attachment and glass shower screen. Low level WC. Wash hand basin with storage under. Chrome towel radiator.

Outside

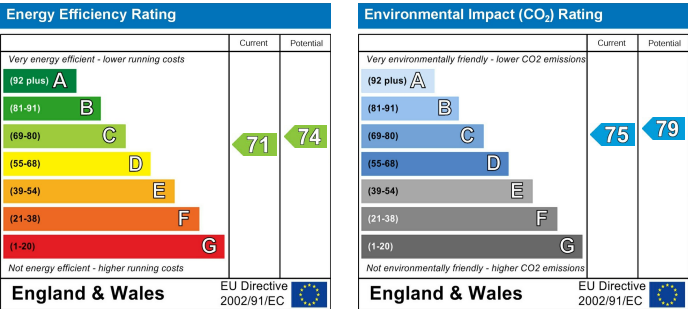
Communal internal courtyard with raised flowerbeds. Surrounding communal gardens and communal bin area.



30 Guildbourne Centre, Worthing, West Sussex, BN11 1LZ

T: 01903 331247 E: info@robertluff.co.uk

www.robertluff.co.uk



The services, systems and appliances listed in this section have not been tested by us and no guarantee as to their operating ability or efficiency is given. All photographs and measurements have been taken as a guide only and are not precise. Floor plans where included are not to scale and accuracy is not guaranteed. If you require clarification or further information on any points please contact us, especially if you are travelling some distance to view. All measurements are approximate.